



## **SILSPEC® SSS *SILICONE STRIP SEAL***

- Fast, Easy Installation
- Versatile
- High Movement Capacity
- Durable
- Economical
- Repairable

***100 PERCENT SILICONE PROFILE PROVIDES EXCELLENT UV PROTECTION AND GIVES HIGH MOVEMENT CAPABILITY***



SILSPEC® SSS *SILICONE STRIP SEAL* shown with SILSPEC 2000 Elastomeric Concrete



*Serving the companies that build America*



## SSS SILICONE STRIP SEAL

### Fast, Easy Installation

- Most SILSPEC® SSS installations can be completed between rush hours.
- Contractor or maintenance crews can be easily trained to install SILSPEC® SSS *Silicone Strip Seal*.
- Required installation tools and equipment are readily available.

### Versatile

- SILSPEC® SSS is an excellent choice for new construction in a wide range of climates and engineering configurations.
- SILSPEC® SSS can be used in new construction applications or retrofit bridge preservation applications.

**SILSPEC® SSS Silicone Strip Seal**  
**Steel Armor Joint Detail**

CONSTRUCTION NOTES:

**GENERAL:**  
JOINT FACES SHALL BE SOUND, PLUMB, CLEAN (SANDBLAST) AND DRY.  
PRIME JOINT FACES WITH DOW CORNING® PRIMER C-OS AND ALLOW TO DRY TO TOUCH.

**SSS-150/SSS-225/SSS-400 PROFILE:**  
INSTALL BACKER ROD TO APPROPRIATE DEPTH TO ALLOW PROFILE TO RECESS A MINIMUM OF 1/2" BELOW ROAD SURFACE.  
GUN A CONTINUOUS SETTING BEAD OF DOW CORNING® 995 ADHESIVE/SEALANT AT THE LUG DEPTH OF THE PROFILE.  
FOLD AND INSERT THE CLEANED/ PREPARED PROFILE TO THE PROPER DEPTH AND ALLOW TO OPEN. BE SURE THE LOCKING LUGS ARE IN CONTACT WITH THE JOINT FACES AND PUSH THE LUGS INTO THE SETTING BEAD TO ENSURE CONTACT. CENTER THE TOP OF THE PROFILE A IN THE JOINT OPENING.  
APPLY A CONTINUOUS LOCKING BEAD OF DOW CORNING® 995 ADHESIVE/SEALANT OVER THE LOCKING LUGS.  
TOOL THE LOCKING BEAD TO ENSURE CONTACT WITH THE JOINT FACES AND PROFILE. THE BEAD SHOULD BE NO HIGHER THAN THE SERRATIONS IN THE PROFILE FACES.  
ALLOW THE COMPLETED SEAL TO SIT 1 HOUR BEFORE OPENING THE JOINT TO TRAFFIC.  
NOTE: FOR ADDED CORROSION RESISTANCE OF THE STEEL JOINT FACES, SILSPEC® PRIMER 2000 CAN BE SUBSTITUTED FOR DOW CORNING® PRIMER C-OS. SEE SILSPEC® PRIMER 2000 PRODUCT DATA SHEET FOR MIXING AND HANDLING INFORMATION.

SSS-150/SSS-225 PROFILE

SSS-400 PROFILE

SILSPEC® SSS SETTING CHART	
PROFILE SIZE:	
SSS-150	1-3/4" TO 2-1/2"
SSS-225	2-3/4" TO 3-1/2"
SSS-400	3-1/4" TO 4"
NOTE: SETTING DEPTHS VARY WITH JOINT OPENING WIDTH.	

		SILSPEC® SSS Silicone Strip Seal	
Silicone Specialties, Inc. P.O. Box 50009 Tulsa OK 74150 (918)587-5567		DATE: 10/22/2015	DRAWING# 1 OF 1
		PROJECT: Steel Armor Joint Detail	
		www.ssilom.com	NOT TO SCALE

**SILSPEC® SSS Silicone Strip Seal**  
**Concrete Joint Detail**

CONSTRUCTION NOTES:

**GENERAL:**  
JOINT FACES SHALL BE SOUND, PLUMB, CLEAN (SANDBLAST) AND DRY.  
PRIME JOINT FACES WITH DOW CORNING® PRIMER P AND ALLOW TO DRY TO TOUCH.

**SSS-150/SSS-225/SSS-400 PROFILE:**  
INSTALL BACKER ROD TO APPROPRIATE DEPTH TO ALLOW PROFILE TO RECESS A MINIMUM OF 1/2" BELOW ROAD SURFACE.  
GUN A CONTINUOUS SETTING BEAD OF DOW CORNING® 995 ADHESIVE/SEALANT AT THE LUG DEPTH OF THE PROFILE.  
FOLD AND INSERT THE CLEANED/ PREPARED PROFILE TO THE PROPER DEPTH AND ALLOW TO OPEN. BE SURE THE LOCKING LUGS ARE IN CONTACT WITH THE JOINT FACES AND PUSH THE LUGS INTO THE SETTING BEAD TO ENSURE CONTACT. CENTER THE TOP OF THE PROFILE A IN THE JOINT OPENING.  
APPLY A CONTINUOUS LOCKING BEAD OF DOW CORNING® 995 ADHESIVE/SEALANT OVER THE LOCKING LUGS.  
TOOL THE LOCKING BEAD TO ENSURE CONTACT WITH THE JOINT FACES AND PROFILE. THE BEAD SHOULD BE NO HIGHER THAN THE SERRATIONS IN THE PROFILE FACES.  
ALLOW THE COMPLETED SEAL TO SIT 1 HOUR BEFORE OPENING THE JOINT TO TRAFFIC.

SSS-150/SSS-225 PROFILE

SSS-400 PROFILE

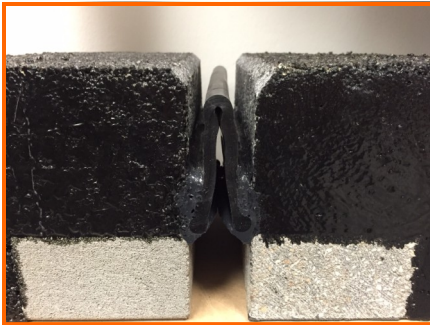
SILSPEC® SSS SETTING CHART	
PROFILE SIZE:	
SSS-150	1-3/4" TO 2-1/2"
SSS-225	2-3/4" TO 3-1/2"
SSS-400	3-1/4" TO 4"
NOTE: SETTING DEPTHS VARY WITH JOINT OPENING WIDTH.	

		SILSPEC® SSS Silicone Strip Seal	
Silicone Specialties, Inc. P.O. Box 50009 Tulsa OK 74150 (918)587-5567		DATE: 10/22/2015	DRAWING# 1 OF 1
		PROJECT: CONCRETE JOINT DETAIL	
		www.ssilom.com	NOT TO SCALE

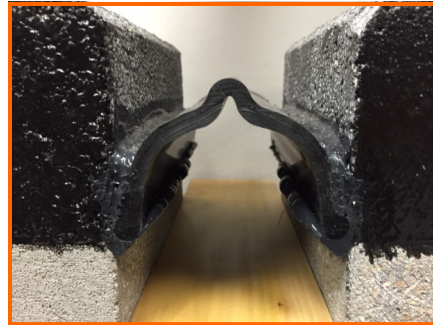
## ***High Movement Capacity***

- SSS-150– 1/2" Minimum to 2" Maximum Joint Opening Movement
- SSS-225– 3/4" Minimum to 3" Maximum Joint Opening Movement
- SSS-400– 1" Minimum to 5" Maximum Joint Opening Movement

During cyclic movement of the joint, the profile simply folds and unfolds free of tension on the bond line, and virtually free of tensile stresses in the silicone material.



Joint Closed



Joint Open

## ***Durable***

- Durable in all climates, Silicone Seals can withstand extreme heat and cold temperatures.

## ***Economical***

- Compared to other systems in use today, SILSPEC<sup>®</sup> SSS has lower installation cost.
- With it's ease of repair, SILSPEC<sup>®</sup> SSS has one of the lowest life cycle costs of any joint repair system available.

## ***Repairable***

- If a SILSPEC<sup>®</sup> SSS joint is damaged, only the damaged area needs to be replaced, unlike other systems which need total removal and replacement.
- A SILSPEC<sup>®</sup> SSS joint replacement can be accomplished quickly and economically with maintenance personnel.



## Availability

The SILSPEC® SSS *SILICONE STRIP SEAL* is available through a network of distributors throughout the U.S. and Canada. For technical assistance contact SSI or your authorized distributor.

## Complete System Continuity

The SILSPEC® SSS *SILICONE STRIP SEAL* when combined with our SILSPEC® Elastomeric Concretes, SILSPEC® 900PNS and SILSPEC® 2000 it forms a fast, economical option for joint construction, repairs or replacement.

SSI *SILICONE STRIP SEAL* is part of the SSI Family of transportation products:

**SILSPEC® 900PNS • SILSPEC® 2000 • SILSPEC® FLEXPATCH • SILSPEC® RE-DECK • SILSPEC® DECKSEAL  
SILSPEC® SES • SILSPEC® SSS**

**Warranty Limitations:** SSI REPRESENTS TO THE PURCHASER OF THIS PRODUCT FROM SSI (REFERRED TO AS CUSTOMER) THAT THE INFORMATION IN THIS LITERATURE IS AN ACCURATE DESCRIPTION OF THE TYPICAL CHARACTERISTICS, PROPERTIES AND USES OF THE PRODUCT, IF TRANSPORTED, STORED AND APPLIED IN ACCORDANCE WITH THIS LITERATURE AND THE REFERENCED MATERIAL SAFETY DATA SHEET. UNLESS SSI PROVIDES BEFORE PRODUCT INSTALLATION AN EXPRESS WRITTEN WARRANTY AFTER RECEIPT AND EVALUATION OF SPECIFIC WRITTEN PROJECT CONDITIONS AND APPLICABLE SCOPE DOCUMENTATION, SSI'S EXCLUSIVE WARRANTY IS THAT THE PRODUCT WILL CONFORM TO THE SALES REPRESENTATIONS STATED HEREIN AND THE CURRENT MATERIAL SAFETY DATA SHEET. SSI EXPRESSLY DISCLAIMS ALL OTHER EXPRESS OR IMPLIED WARRANTIES, INCLUDING WITHOUT LIMITATION WARRANTIES OF MERCHANTABILITY AND FITNESS FOR PARTICULAR PURPOSE. IN NO EVENT SHALL SSI'S LIABILITY FOR DAMAGES ARISING FROM THE SALE OF THIS PRODUCT THE AMOUNT OF PURCHASE PRICE RECEIVED BY SSI FROM CUSTOMER FOR THIS PRODUCT DELIVERED TO THE PROJECT IN QUESTION, OR AT SSI'S SOLE OPTION, SSI MAY REPLACE THE PRODUCT OR PORTION THEREOF THAT DOES NOT CONFORM TO THE FOREGOING REPRESENTATION. SSI EXPRESSLY EXCLUDES ANY LIABILITY FOR SPECIAL OR CONSEQUENTIAL DAMAGES.

CUSTOMER IS SOLELY RESPONSIBLE FOR EVALUATING JOB CONDITIONS AND THE SUITABILITY OF DESCRIBED PHYSICAL PROPERTIES AND CHARACTERISTICS OF THE PRODUCT TO MEET SPECIFIED OR APPARENT PROJECT REQUIREMENTS AND FOR APPLICATION OF THE PRODUCT IN ACCORDANCE WITH SSI'S RECOMMENDATIONS.

THESE REPRESENTATIONS ARE INTENDED FOR RELIANCE EXCLUSIVELY BY THE CUSTOMER AND ARE NOT INTENDED TO BENEFIT ANY OTHER PERSON OR ENTITY. THESE EXCLUSIONS, MODIFICATIONS OR LIMITATIONS OF WARRANTIES, INCLUDING THEIR EFFECT ON RIGHTS AND REMEDIES, THAT ARE EFFECTIVE AGAINST ARE ALSO EFFECTIVE AGAINST SUBSEQUENT PURCHASERS, USERS AND THIRD PARTY BENEFICIARIES OF THE SALE OF THIS PRODUCT.

SSI UNDERTAKES NO RESPONSIBILITY FOR STORAGE, MIXTURE, PREPARATION OF SURFACES, APPLICATION, USE OR MIS-USE OF PRODUCT OR ITS CONFORMITY TO SPECIFICATIONS THAT ARE NOT PREVIOUSLY AND EXPRESSLY ACKNOWLEDGED IN WRITING BY SSI.



**800-888-8909 • Fax 918-582-7510 • [www.ssicm.com](http://www.ssicm.com)**

TULSA  
430 S. ROCKFORD  
TULSA, OK 74120  
918/587-5567

OKLAHOMA CITY  
610 NE 36th ST.  
OKLAHOMA CITY, OK  
73105  
405/524-9525

DALLAS  
2367 GLENDA LANE  
DALLAS, TX 75229  
972/243-0676

HOUSTON  
2211 SABINE  
HOUSTON, TX 77007  
713/862-3900

AUSTIN  
13815 IMMANUEL ROAD  
PFLUGERVILLE, TX 78660  
512/326-1156

SAN ANTONIO  
2104 MANNIX  
SAN ANTONIO, TX 78217  
210/930-6360

MCALLEN  
1503 MID-CITIES DRIVE  
PHARR, TX 78577-2128  
956/782-1341

FT. WORTH  
2545 BERNER ST.  
FORT WORTH, TX 76111  
682/647-1881

EL PASO  
7198 MERCHANT STE A-1  
EL PASO, TX 79915  
915/591-6800

DALLAS- RICHARDSON  
610 S. Sherman ST.  
STE. 118  
RICHARDSON TX. 75081  
972/234-1163

HOUSTON- BLALOCK  
4400 BLALOCK ROAD  
SUITE 100  
HOUSTON TX 77041  
713/460-8800

BATON ROUGE  
5813 MCCANN DRIVE  
BATON ROUGE, LA 70809  
225/620-0950

NEW ORLEANS  
300 JEFFERSON HWY  
BLDG 4 STE. 701  
JEFFERSON, LA 70121  
504/539-3102

KANSAS CITY  
3030 SOUTHWEST BLVD  
KANSAS CITY MO 64108  
816/561-1617