



HIGHWAY • AIRPORT • BRIDGE

DECKSEAL *Polymer Healer-Sealer*

- Reduces Chloride Ion Penetration
- Deep Penetrating
- Fills Open Non-Moving Cracks
- Retard Corrosion
- Structurally Strengthens Concrete Surface
- Does Not Dissipate With Age
- Safer Than Methacrylates
- Verifiable Penetration: Fluorescent Tracer Dye



HIGHWAY • AIRPORT • BRIDGE

Serving the companies that build America



DECKSEAL

HIGHWAY • AIRPORT • BRIDGE

Advantages

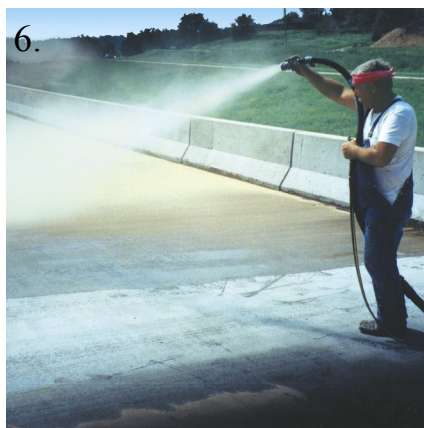
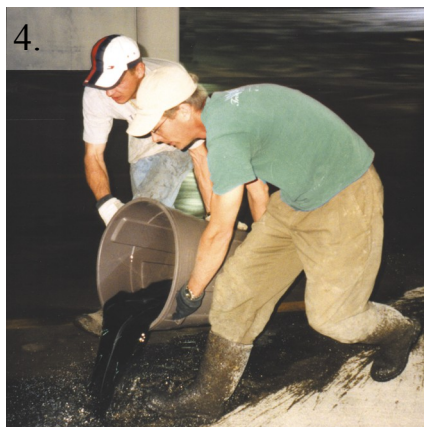
	DECKSEAL	Urethane Deck Coatings	Siloxanes/Silanes	3 Component HMWMA's	Linseed Oils
Bond Strength	EXCELLENT	FAIR	NONE	POOR	NONE
Tensile Strength	EXCELLENT	POOR	N/A	FAIR	N/A
Waterproofs Surface	EXCELLENT	FAIR	GOOD	GOOD	POOR
Volatile when Improperly Mixed	NONE	NO	N/A	YES	N/A
Moisture Sensitive	NONE	YES	NO	NO	NO

LABORATORY TESTS	RESULTS	ASTM C881 SPECIFICATIONS
Mix Ratio (by volume)	1 to 1	N/A
C-881 Brookfield Viscosity	<50 cps	2000 cps max.
Chloride Ion Penetration Resistance (AASHTO T-259) (90 day ponding)	100% Effective	N/A
C-882 Bond Strength	2000 psi	1500 PSI min
D-570 Water Absorption (24 hr. immersion)	0.74%	1.0% max
D-638 Elongation at Break	45%	1.0% min
C-881 Filler Content	0.0%	N/A
EPA Method 24 Percentage of Solids	>75%	N/A

Physical Properties

SSI DECKSEAL is a two component, polymer deck sealant that significantly increases the service life of both new and partially deteriorated concrete decks. DECKSEAL seals the surface and penetrates into the cracks to form a barrier which impedes moisture intrusion and Chloride Ion penetration.

PROPERTIES	PART A	PART B	MIXED SYSTEM
Wt. per Gallon /Litre	8.7 lb. / 4 kg	7.7 lbs. / 3.5 kg	8.2 lbs / 3.7kg
Viscosity	<50 cps	<50 cps	<50 cps
Specific Gravity	1.05	.93	.97



Application

1. Patch concrete with appropriate SSI product.
2. Clean concrete by abrasive blasting. Surface must be clean, dry, and frost free.
3. Mechanically mix A & B components 1:1 by volume with a Jiffy Mixer and variable speed drill at 300 rpm for a minimum of 3 minutes.
4. Within 5 minutes, flood coat DECKSEAL onto concrete.
5. Immediately distribute evenly and work into concrete for a minimum of 5 minutes for maximum penetration. Keep ponding DECKSEAL into cracks to refusal. Remove all excess with a squeegee on a smooth surface and a Broom on textured surfaces. Surface should appear damp but with no film Build-up or ponding prior to broadcast.
6. Broadcast oven-dried silica to refusal.
7. After initial cure, remove excess sand.

Compliances

Federal EPA V.O.C. < 250 g/L

AASHTO T-259 Chloride Ion Penetration Resistance (90 day ponding)

Coverage

Broom— Finished Concrete:*
65– 100 sq ft/gal or 6.0– 9.3 sq m/L

Steel-toweled concrete:*
150-200 sq ft/gal or 13.9-18.6 sq m/L

* Coverage depends on porosity of concrete

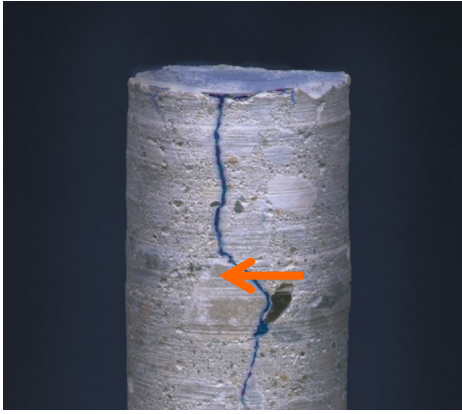
Packaging

DECKSEAL is sold:
2 gallon/7.6 liter units
(2– 1 Gallon Cans)

10 gallon/37.8 liter units
(2– 5 Gallon pails)

110 gallon/416 liter units
(2– 55 Gallon Drums)

Quality Assurance



The best way to check for complete penetration of DECKSEAL is to take core samples.

DECKSEAL contains a fluorescent tracer dye., which illuminates under black light. This provides evidence of penetration into the finest hairline cracks in core samples as illustrated by arrow on photo.

Limitations

- Apply to dry and fully cured concrete only.
- Compressed air equipment must have air/oil Separators.
- Pot Life— Approx. 1 hr. in mass at 72°F or 22°C. 20 minutes in thin film at 72°F or 22°C.
- Store DECKSEAL at 65° to 80°F or 10°– 27°C.
- Condition DECKSEAL to 65°-80°F or 18°-27°C.
- Minimum application temperature: 40F or 4C.
- Shelf Life— 1 year in original unopened container.
- Curing Time— Approx. 4 hrs. at substrate temp. of 77°F or 22°C.
- Do not apply over curing compounds.
- Not for slab on grade in freezing climates.

Cautions

- Keep away from heat, sparks, and open flame.
- Flammable Liquid, Corrosive UN 2924.
- Use only with adequate ventilation.
- Avoid all contact with skin and eyes.
- Avoid breathing vapors.
- For industrial use only.
- Keep out of reach of children.
- Use safety gloves, goggles,, and NIOSH/MSHA approved organic vapor respirator if ventilation is inadequate.
- Do not thin with solvents.

SILSPEC® DECKSEAL *Polymer Healer-Sealer* is part of the SSI Family of transportation products:

**SILSPEC® 900PNS • SILSPEC® 2000 • SILSPEC® FLEXPATCH • SILSPEC® RE-DECK • SILSPEC® DECKSEAL
SILSPEC® SES • SILSPEC® SSS**



800-888-8909 ♦ www.ssicm.com

Fax: 918-582-7510

Warranty Limitations: SSI REPRESENTS TO THE PURCHASER OF THIS PRODUCT FROM SSI (REFERRED TO AS CUSTOMER) THAT THE INFORMATION IN THIS LITERATURE IS AN ACCURATE DESCRIPTION OF THE TYPICAL CHARACTERISTICS, PROPERTIES AND USES OF THE PRODUCT, IF TRANSPORTED, STORED AND APPLIED IN ACCORDANCE WITH THIS LITERATURE AND THE REFERENCED MATERIAL SAFETY DATA SHEET, UNLESS SSI PROVIDES BEFORE PRODUCT INSTALLATION AN EXPRESS WRITTEN WARRANTY AFTER RECEIPT AND EVALUATION OF SPECIFIC WRITTEN PROJECT CONDITIONS AND APPLICABLE SCOPE DOCUMENTATION. SSI'S EXCLUSIVE WARRANTY IS THAT THE PRODUCT WILL CONFORM TO THE SALES REPRESENTATIONS STATED HEREIN AND THE CURRENT MATERIAL SAFETY DATA SHEET. SSI EXPRESSLY DISCLAIMS ALL OTHER EXPRESS OR IMPLIED WARRANTIES, INCLUDING WITHOUT LIMITATION WARRANTIES OF MERCHANTABILITY AND FITNESS FOR PARTICULAR PURPOSE. IN NO EVENT SHALL SSI'S LIABILITY FOR DAMAGES ARISING FROM THE SALE OF THIS PRODUCT THE AMOUNT OF PURCHASE PRICE RECEIVED BY SSI FROM CUSTOMER FOR THIS PRODUCT DELIVERED TO THE PROJECT IN QUESTION, OR AT SSI'S SOLE OPTION, SSI MAY REPLACE THE PRODUCT OR PORTION THEREOF THAT DOES NOT CONFORM TO THE FOREGOING REPRESENTATION. SSI EXPRESSLY EXCLUDES ANY LIABILITY FOR SPECIAL OR CONSEQUENTIAL DAMAGES.

CUSTOMER IS SOLELY RESPONSIBLE FOR EVALUATING JOB CONDITIONS AND THE SUITABILITY OF DESCRIBED PHYSICAL PROPERTIES AND CHARACTERISTICS OF THE PRODUCT TO MEET SPECIFIED OR APPARENT PROJECT REQUIREMENTS AND FOR APPLICATION OF THE PRODUCT IN ACCORDANCE WITH SSI'S RECOMMENDATIONS.

THESE REPRESENTATIONS ARE INTENDED FOR RELIANCE EXCLUSIVELY BY THE CUSTOMER AND ARE NOT INTENDED TO BENEFIT ANY OTHER PERSON OR ENTITY. THESE EXCLUSIONS, MODIFICATIONS OR LIMITATIONS OF WARRANTIES, INCLUDING THEIR EFFECT ON RIGHTS AND REMEDIES, THAT ARE EFFECTIVE AGAINST ARE ALSO EFFECTIVE AGAINST SUBSEQUENT PURCHASERS, USERS AND THIRD PARTY BENEFICIARIES OF THE SALE OF THIS PRODUCT.

SSI UNDERTAKES NO RESPONSIBILITY FOR STORAGE, MIXTURE, PREPARATION OF SURFACES, APPLICATION, USE OR MIS-USE OF PRODUCT OR ITS CONFORMITY TO SPECIFICATIONS THAT ARE NOT PREVIOUSLY AND EXPRESSLY ACKNOWLEDGED IN WRITING BY SSI.

For Purchase, contact SSI at the following locations:

TULSA OK (918)587-5567 ♦ OKLAHOMA CITY OK (405)524-9525 ♦ SPRINGDALE AR (479)751-3170 ♦ DALLAS TX (972)243-0676 ♦ DALLAS- RICHARDSON (972)234-1163 ♦ FT WORTH TX (682)647-1881
HOUSTON TX- SABINE, (713)862-3900 ♦ HOUSTON- BLAYLOCK, (713)460-8800 ♦ AUSTIN TX (512)326-1156 ♦ SAN ANTONIO TX (210)930-6360 ♦ EL PASO TX (915)591-6800 ♦ MCALLEN TX (956)782-1341
BATON ROUGE LA (225)620-0950 ♦ NEW ORLEANS LA (504)539-3102 ♦ KANSAS CITY MO (816)561-1617 ♦ ST LOUIS MO (310)410-6800

We know you have a choice, thank you for choosing SSI.