



DESCRIPTION

SILSPEC® SES Expansion Joint Seal is a pre-compressed silicone-and-foam hybrid seal for expansion and construction joints in bridges and pavements.

- Watertight
- Fuel Resistant
- High Movement Capacity
- Durable
- No Steel Anchorages
- Fast Installation

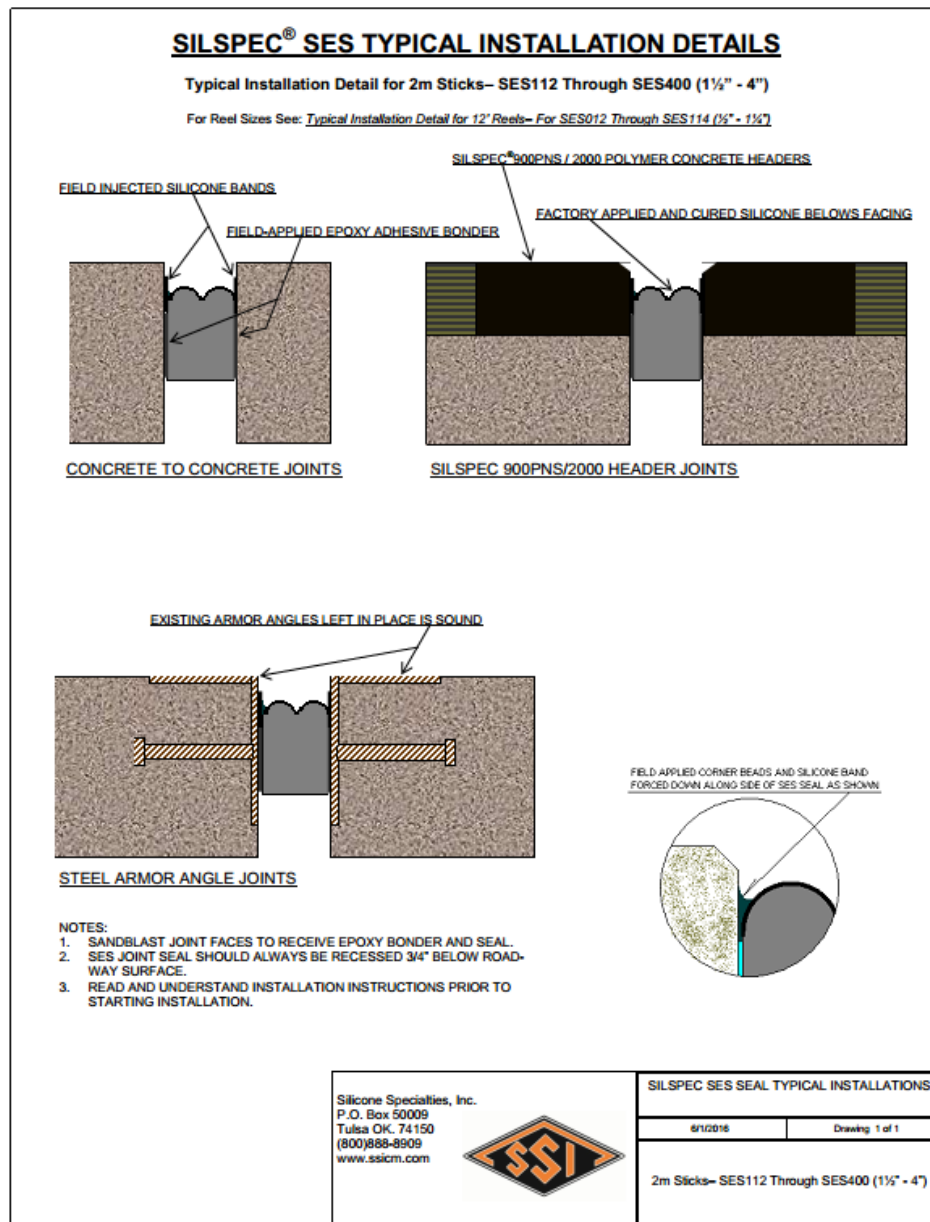


FAST & EASY INSTALLATION

- Most SILSPEC® SES installations can be completed between rush hours
- Contractor or maintenance crews can be easily trained to install SILSPEC SES Expansion Joint Seal
- Required installation tools and equipment are readily available

VERSATILE

- SILSPEC® SES is an excellent choice for new construction in a wide range of climates and engineering configurations
- SILSPEC® SES can be used in new construction applications or retrofit bridge preservation applications

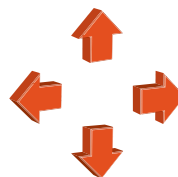


For a copy of our Standard Construction Details, please contact SSI.

HIGH MOVEMENT CAPACITY

All Axis Movement:

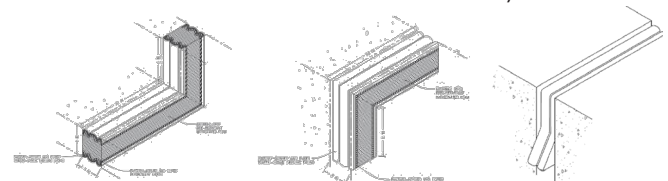
SILSPEC® SES moves ± 50% of the nominal size in all directions of movement.

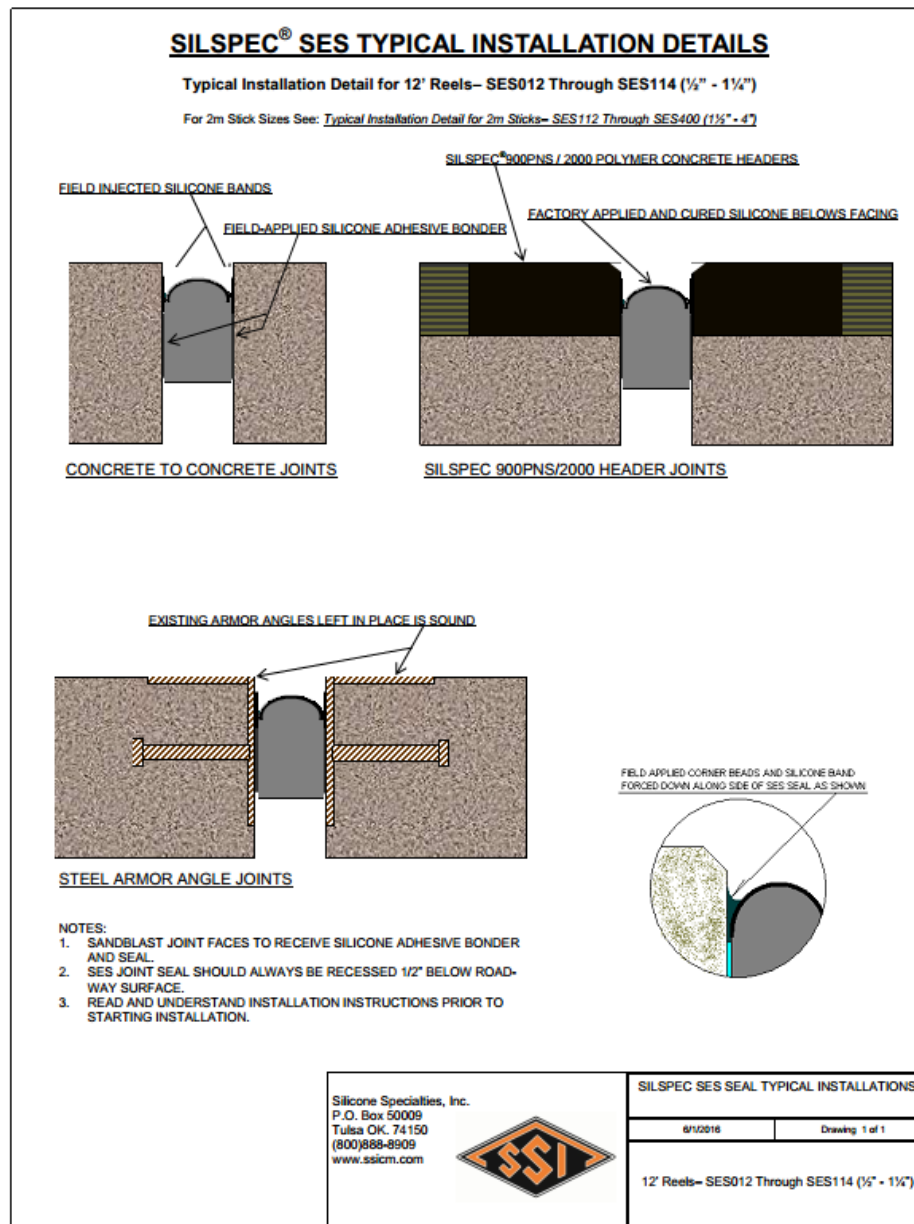


FACTORY-MADE TRANSITIONS

Pre-fabricated transitions make installation in curbs, parapet walls and terminations straight-forward.

Universal 90's & Terminations to Direct Water Away From Structure





For a copy of our Standard Construction Details, please contact SSI.

DURABLE

Durable in all climates, the silicone-faced profile can withstand extreme climate conditions that other hybrids are not recommended for.

ECONOMICAL

- Compared to other systems in use today, SILSPEC® SES has lower installation costs
- With its ease of repair, SILSPEC® SES has one of the lowest life-cycle costs of any joint repair system available



REPAIRABLE

- If a SILSPEC® SES joint is damaged, only the damaged area needs to be replaced – unlike other systems which need total removal and replacement
- A SILSPEC® SES joint replacement can be accomplished quickly and economically with maintenance personnel

AVAILABILITY

The SILSPEC® SES Expansion Joint Seal is available through a network of distributors throughout the U.S. and Canada. For technical assistance, contact SSI or your authorized distributor.

COMPLETE SYSTEM CONTINUITY

The SILSPEC® SES Expansion Joint Seal, when combined with our SILSPEC® Elastomeric Concretes, SILSPEC® 900PNS, and SILSPEC® 2000, forms a fast, economical option for joint construction, repairs, or replacement.

(800) 888-8909



ssicm.com

Warranty Limitations: SSI represents to the purchaser of this product from SSI (referred to as customer) that the information in this literature is an accurate description of the typical characteristics, properties, and uses of the product, if transported, stored, and applied in accordance with this literature and the referenced Material Safety Data Sheet. Unless SSI provides, before product installation, an express written warranty after receipt and evaluation of specific written project conditions and applicable scope documentation, SSI's exclusive warranty is that the product will conform to the sales representations stated, herein, and the current Material Safety Data Sheet. SSI expressly disclaims all other express or implied warranties, including without limitation warranties of merchantability and fitness for particular purpose. In no event shall SSI's liability for damages arising from the sale of this product the amount of purchase price received by SSI from customer for this product delivered to the project in question, or at SSI's sole option, SSI may replace the product or portion thereof that does not conform to the foregoing representation. SSI expressly excludes any liability for special or consequential damages.

Customer is solely responsible for evaluating job conditions and the suitability of described physical properties and characteristics of the product to meet specified or apparent project requirements and for application of the product in accordance with SSI's recommendations.

These representations are intended for reliance exclusively by the customer and are not intended to benefit any other person or entity. These exclusions, modifications, or limitations of warranties, including their effect on rights and remedies, that are effective against are also effective against subsequent purchasers, users, and third party beneficiaries of the sale of this product.

SSI undertakes no responsibility for storage, mixture, preparation of surfaces, application, use, or misuse of product or its conformity to specifications that are not previously and expressly acknowledged in writing by SSI.

To Purchase, Please Contact SSI at Any of the Following Locations:

Dallas, TX (972) 243-0676 ♦ Fort Worth, TX (682) 647-1881
Houston, TX (713) 460-8800 ♦ Austin, TX (512) 326-1156
San Antonio, TX (210) 930-6360 ♦ El Paso, TX (915) 591-6800
McAllen, TX (956) 782-1341 ♦ Springdale, AR (479) 365-8050

Baton Rouge, LA (225) 620-0950 ♦ New Orleans, LA (504) 539-3102
Kansas City, MO (816) 561-1617 ♦ St. Louis, MO (314) 410-6801
Oklahoma City, OK (405) 524-9525 ♦ Tulsa, OK (918) 587-5567

Thank You For Choosing SSI