



DESCRIPTION

SILSPEC® XJS® Expansion Joint System features SSI's proven SILSPEC® 900PNS Elastomeric Nosing with Dow Corning® High performance silicone technology.

- Fast & Easy Installation
- Versatile
- High Movement Capacity
- Durable
- Economical
- Repairable



FAST & EASY INSTALLATION

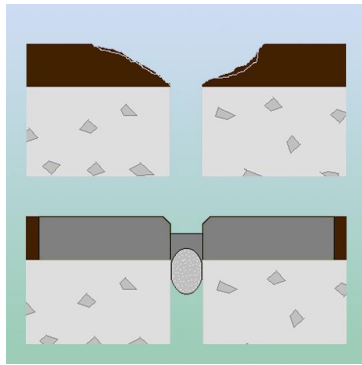
- Most SILSPEC® XJS® joint repairs can be completed between rush hours.
- Contractor or maintenance crews can easily be trained to install SILSPEC® XJS®.
- Required tools and equipment are readily available.

VERSATILE

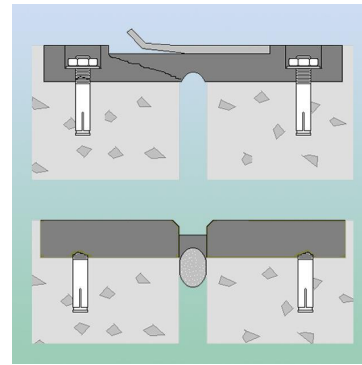
- SILSPEC® XJS® is an excellent choice for new construction, in a wide range of climates and engineering configurations.
- SILSPEC® XJS® can be used to repair, or replace, most systems in use today. See illustrations, on the next page, for a schematic description of these applications.



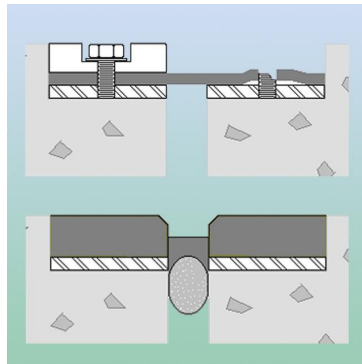
Asphalt Overlay Repair



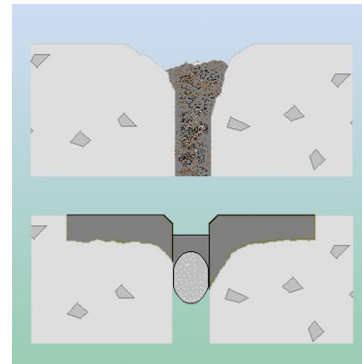
Modular Joint Repair



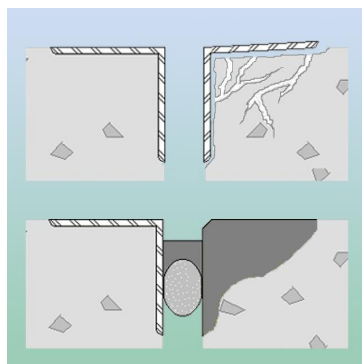
Neoprene Strip Joint Repair



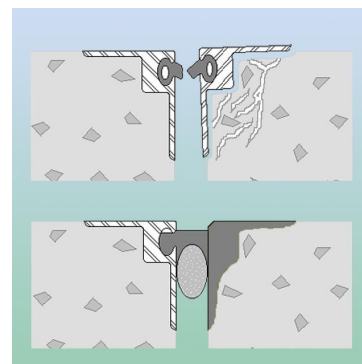
Spalled Joint Face Repair



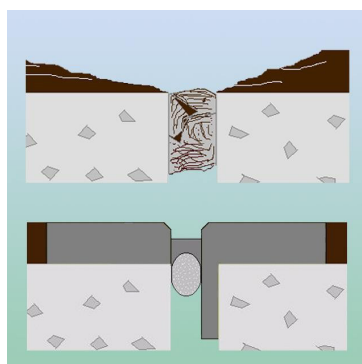
Armor Joint Repair



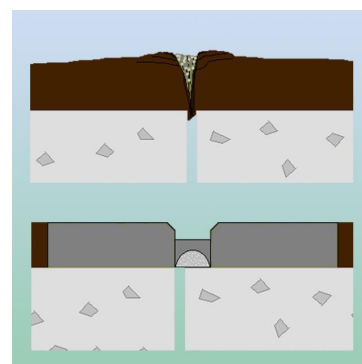
Strip Seal Joint Repair



Down Size Joints



Closed Joint Resize





HIGH MOVEMENT CAPACITY

- Dow Corning® 902RCS has the highest movement capacity of any formed-in-place sealant currently available on the market.
- +100/-50 percent for joints 1" to 3" wide.
- ±50 percent for joint 3" to 4" wide.

At Rest



View From Side

Horizontal Movement

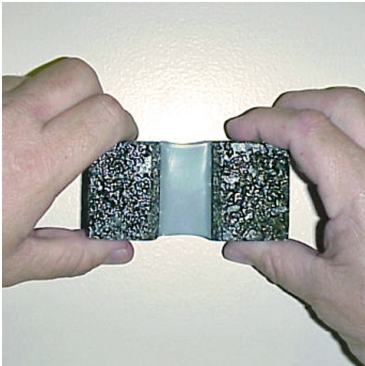


View From Side

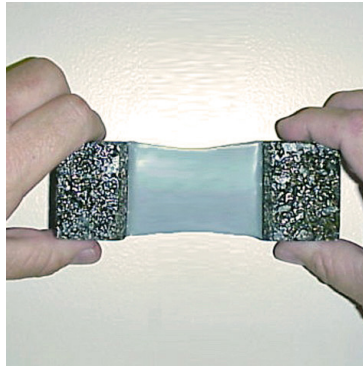
Skewed Movement



View From Side



View From Top



View From Top



View From Top

DURABLE

Durable in all climates, SILSPEC® XJS® has been used to repair joints from Alaska to South America.

ECONOMICAL

- Compared to other systems in use today, SILSPEC® XJS® has a lower installation cost.
- With its ease of repair, SILSPEC® XJS® has one of the lowest life cycle costs of any joint repair system available.



REPAIRABLE

- If a SILSPEC® XJS® joint is damaged, only the damaged area needs to be replaced. This is unlike other systems, which need a total removal and replacement.
- SILSPEC® XJS® joint replacement can be accomplished quickly and economically, with maintenance personnel.

AVAILABILITY

The SILSPEC® XJS® Expansion Joint System is available through a network of distributors, throughout the U.S. and Canada. For technical assistance, contact SSI or your authorized distributor.

(800) 888-8909



ssicm.com

Warranty Limitations: SSI represents to the purchaser of this product from SSI (referred to as customer) that the information in this literature is an accurate description of the typical characteristics, properties, and uses of the product, if transported, stored, and applied in accordance with this literature and the referenced Material Safety Data Sheet. Unless SSI provides, before product installation, an express written warranty after receipt and evaluation of specific written project conditions and applicable scope documentation, SSI's exclusive warranty is that the product will conform to the sales representations stated, herein, and the current Material Safety Data Sheet. SSI expressly disclaims all other express or implied warranties, including without limitation warranties of merchantability and fitness for particular purpose. In no event shall SSI's liability for damages arising from the sale of this product the amount of purchase price received by SSI from customer for this product delivered to the project in question, or at SSI's sole option, SSI may replace the product or portion thereof that does not conform to the foregoing representation. SSI expressly excludes any liability for special or consequential damages.

Customer is solely responsible for evaluating job conditions and the suitability of described physical properties and characteristics of the product to meet specified or apparent project requirements and for application of the product in accordance with SSI's recommendations.

These representations are intended for reliance exclusively by the customer and are not intended to benefit any other person or entity. These exclusions, modifications, or limitations of warranties, including their effect on rights and remedies, that are effective against are also effective against subsequent purchasers, users, and third party beneficiaries of the sale of this product.

SSI undertakes no responsibility for storage, mixture, preparation of surfaces, application, use, or misuse of product or its conformity to specifications that are not previously and expressly acknowledged in writing by SSI.

To Purchase, Please Contact SSI at Any of the Following Locations:

Dallas, TX (972) 243-0676 ♦ Fort Worth, TX (682) 647-1881
Houston, TX (713) 460-8800 ♦ Austin, TX (512) 326-1156
San Antonio, TX (210) 930-6360 ♦ El Paso, TX (915) 591-6800
McAllen, TX (956) 782-1341 ♦ Springdale, AR (479) 365-8050

Baton Rouge, LA (225) 620-0950 ♦ New Orleans, LA (504) 539-3102
Kansas City, MO (816) 561-1617 ♦ St. Louis, MO (314) 410-6801
Oklahoma City, OK (405) 524-9525 ♦ Tulsa, OK (918) 587-5567

Thank You For Choosing SSI