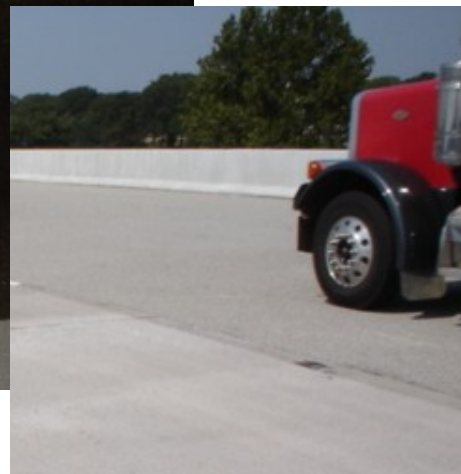
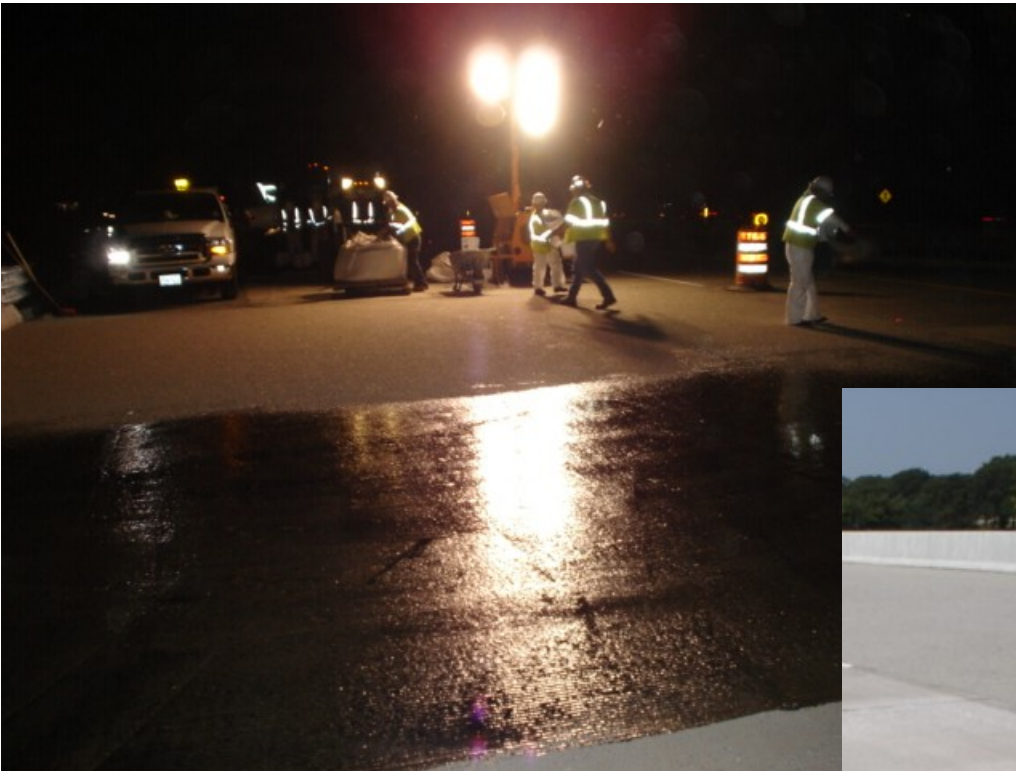




RE-DECK *Bridge and Pavement Wearing Course*

- Complies with ASTM C881, Type III, Grade 1, Classes B & C
- Excellent Bond Strength
- Low Modulus
- Low Viscosity
- High Early Strength
- Easy to Mix 1:1 Ratio
- Moisture Insensitive
- Non-Flammable
- Light-Weight
- Fast Application
- Environmentally Friendly
- Short Lane Closure Time

Keep traffic moving with SSI RE-DECK!



Serving the companies that build America



RE-DECK *Bridge and Pavement Wearing Course*

Product Description

SSI RE-DECK is a solvent-free, moisture insensitive, 100% solids, low modulus, two component urethane-epoxy bonding agent. RE-DECK meets all requirements of ASTM-C-881 Type III, Grade 1, Classes B & C.

Excellent for use as binder for skid-resistant overlays on concrete bridges and elevated slabs.

USES

- Bonding skid-resistant overlays to bridges and elevated slabs
- Patching concrete as epoxy mortar

Properties

RESIN PROPERTIES		
LABORATORY TESTS	RESULTS	ASTM C 881 SPECIFICATIONS
Mix Ratio D-695 Compression Modulus D-638 Tensile Strength D-638 Tensile Elongation C-882 Bond Strength (14 day cure) D-570 Absorption C-881 Brookfield Vis. RV3 @ 20rpm D-2240 Shore D Hardness C-883 Shrinkage C-884 Thermal Compatibility AASHTO T-222 Chloride Ion Permeability	1 : 1 by volume 65,000 psi 2,500 psi 50% 3,000 psi 0.20% 1,500 cps 70 Negligible ¹ Pass 0.9 coulombs	None 130,000 maximum None 30% minimum 1,500 psi minimum 1.0% maximum 2,000 cps maximum None Pass None None
GROUT PROPERTIES		
Sand to Resin– 3.5 : 1 by volume		
C-579 ² Compressive Strength 3 hrs. C-579 ² Compressive Strength 24 hrs. C-579 ² Compressive Strength 48 hrs. (Moist Cure)	1,500 psi 7,000 psi 7,000 psi	N/A N/A N/A

1– Too small to test

2– C-579 Method B with Plastic

Packaging

2 gal / 3.8L units (2– 1 gal cans)

10 gal / 37.9L units (2– 5 gal pails)

110 gal / 416.4L units (2– 55 gal drums)

Coverage

MINIMUM EPOXY & AGGREGATE COVERAGE RATES		
	EPOXY RATE	AGGREGATE RATE
COURSE 1	1 gal / 40 sq ft minimum (1 L / m ²)	10 lbs / sq yd (5.4 kg / m ²)
COURSE 2	1 gal / 20 sq ft minimum (2 L / m ²)	14 lbs / sq yd (7.6 kg / m ²)

Application for Bonding Skid-Resistant Overlays

Step 1. Repair delaminations, potholes, and cracks with SSI FLEXPATCH.

Step 2. RE-DECK must be applied to clean, dry surface. Clean surface by milling, shotblasting, or sandblasting to remove all contaminants. This cleaning shall produce a surface relief equal to the International Concrete Repair Institute (ICR) Surface

Preparation Level 6. Remove dust and debris by blowing off with oil-free compressed air.

Step 3. Mechanically mix component A with component B at 1:1 ratio by volume with Jiffy type mixer and low speed variable drill at 300 rpm for a minimum of 3 minutes. Mix only the quantity that can be used within its working time.

Step 4. Apply neat RE-DECK® by notched squeegee at the specified rate.

Step 5. Broadcast select aggregate to refusal. The aggregate should be angular, hard, durable and free of dirt, clay, asphalt, and other foreign or organic materials. Aggregate shall contain less than 0.2% moisture. The Los Angeles Abrasion percent wear shall be limited to a maximum of 40% after 500 revolutions when tested in accordance with AASHTO T 96.

Step 6. After initial cure of first course, blow off excess aggregate with clean, oil-free air. Do NOT open to traffic.

Step 7. Apply second course of epoxy and aggregate. Allow to cure following the table below. Remove excess aggregate before opening to traffic.

MINIMUM CURING TIME OF RE-DECK						
	Average Temperatures of Overlay Components & Substrate					
	60-64°F 18-18°C	65-69°F 19-21°C	70-74°F 22-23°C	75-79°F 24-26°C	80-84°F 27-29°C	85+°F 29+°C
Min. Cure Time COURSE 1	4 hrs	3 hrs	2.5 hrs	2 hrs	1.5 hrs	1 hr
Min. Cure Time COURSE 2	6-5 hrs	5 hrs	4 hrs	3 hrs	3 hrs	3 hrs

Limitations

- Minimum age of concrete must be 28 days prior to applying RE-DECK as an overlay without manufacturers approval.
- Not for use on exterior slabs on grade subject to freezing without manufacturers approval.
- Working time is temperature and mass dependant– approximately 15 minutes at 70°F.
- Consult SSI technical assistance for further details.

First Aid

EYE CONTACT: Flush immediately with water for at least 15 minutes. Contact physician immediately.

RESPIRATORY CONTACT: Remove person to fresh air.

SKIN CONTACT: Remove any contaminated clothing. Remove polymer immediately with a clean, dry towel and wash skin thoroughly with soap and water. Solvents should not be as they carry the irritant into the skin.

CURED POLYMER IS INNOCUOUS.

Clean-up

EQUIPMENT: Uncured material can be removed with CITRUS CLEANER or other approved solvent. Cured material can only be removed mechanically.

MATERIAL: Collect with absorbent material. Dispose of in accordance with local, state and federal disposal regulations.

Cautions

Component A: Irritant
Component B: Corrosive

Product is a strong sensitizer. Use of safety goggles and chemical resistant gloves is recommended.

Use of a NIOSH/MSHA organic vapor respirator is recommended if ventilation is inadequate.

Avoid breathing vapors.

Avoid skin contact.

Material is a vapor barrier after curing.

Do not thin with solvents.

RE-DECK *Bridge and Pavement Wearing Course* is part of the SSI Family of transportation products:

**SILSPEC® 900PNS • SILSPEC® 2000 • SILSPEC® FLEXPATCH • SILSPEC® RE-DECK • SILSPEC® DECKSEAL
SILSPEC® SES • SILSPEC® SSS**

Warranty Limitations: SSI REPRESENTS TO THE PURCHASER OF THIS PRODUCT FROM SSI (REFERRED TO AS CUSTOMER) THAT THE INFORMATION IN THIS LITERATURE IS AN ACCURATE DESCRIPTION OF THE TYPICAL CHARACTERISTICS, PROPERTIES AND USES OF THE PRODUCT, IF TRANSPORTED, STORED AND APPLIED IN ACCORDANCE WITH THIS LITERATURE AND THE REFERENCED MATERIAL SAFETY DATA SHEET. UNLESS SSI PROVIDES BEFORE PRODUCT INSTALLATION AN EXPRESS WRITTEN WARRANTY AFTER RECEIPT AND EVALUATION OF SPECIFIC WRITTEN PROJECT CONDITIONS AND APPLICABLE SCOPE DOCUMENTATION, SSI'S EXCLUSIVE WARRANTY IS THAT THE PRODUCT WILL CONFORM TO THE SALES REPRESENTATIONS STATED HEREIN AND THE CURRENT MATERIAL SAFETY DATA SHEET. SSI EXPRESSLY DISCLAIMS ALL OTHER EXPRESS OR IMPLIED WARRANTIES, INCLUDING WITHOUT LIMITATION WARRANTIES OF MERCHANTABILITY AND FITNESS FOR PARTICULAR PURPOSE. IN NO EVENT SHALL SSI'S LIABILITY FOR DAMAGES ARISING FROM THE SALE OF THIS PRODUCT THE AMOUNT OF PURCHASE PRICE RECEIVED BY SSI FROM CUSTOMER FOR THIS PRODUCT DELIVERED TO THE PROJECT IN QUESTION, OR AT SSI'S SOLE OPTION, SSI MAY REPLACE THE PRODUCT OR PORTION THEREOF THAT DOES NOT CONFORM TO THE FOREGOING REPRESENTATION. SSI EXPRESSLY EXCLUDES ANY LIABILITY FOR SPECIAL OR CONSEQUENTIAL DAMAGES.

CUSTOMER IS SOLELY RESPONSIBLE FOR EVALUATING JOB CONDITIONS AND THE SUITABILITY OF DESCRIBED PHYSICAL PROPERTIES AND CHARACTERISTICS OF THE PRODUCT TO MEET SPECIFIED OR APPARENT PROJECT REQUIREMENTS AND FOR APPLICATION OF THE PRODUCT IN ACCORDANCE WITH SSI'S RECOMMENDATIONS.

THESE REPRESENTATIONS ARE INTENDED FOR RELIANCE EXCLUSIVELY BY THE CUSTOMER AND ARE NOT INTENDED TO BENEFIT ANY OTHER PERSON OR ENTITY. THESE EXCLUSIONS, MODIFICATIONS OR LIMITATIONS OF WARRANTIES, INCLUDING THEIR EFFECT ON RIGHTS AND REMEDIES, THAT ARE EFFECTIVE AGAINST ARE ALSO EFFECTIVE AGAINST SUBSEQUENT PURCHASERS, USERS AND THIRD PARTY BENEFICIARIES OF THE SALE OF THIS PRODUCT.

SSI UNDERTAKES NO RESPONSIBILITY FOR STORAGE, MIXTURE, PREPARATION OF SURFACES, APPLICATION, USE OR MIS-USE OF PRODUCT OR ITS CONFORMITY TO SPECIFICATIONS THAT ARE NOT PREVIOUSLY AND EXPRESSLY ACKNOWLEDGED IN WRITING BY SSI.



800-888-8909 • Fax 918-582-7510 • www.ssicm.com

TULSA
430 S. ROCKFORD
TULSA, OK 74120
918/587-5567

OKLAHOMA CITY
610 NE 36th ST.
OKLAHOMA CITY, OK
73105
405/524-9525

DALLAS
2367 GLENDA LANE
DALLAS, TX 75229
972/243-0676

HOUSTON
2211 SABINE
HOUSTON, TX 77007
713/862-3900

AUSTIN
13815 IMMANUEL ROAD
PFLUGERVILLE, TX 78660
512/326-1156

SAN ANTONIO
2104 MANNIX
SAN ANTONIO, TX 78217
210/930-6360

MCALLEN
1503 MID-CITIES DRIVE
PHARR, TX 78577-2128
956/782-1341

FT. WORTH
2545 BERNER ST.
FORT WORTH, TX 76111
682/647-1881

EL PASO
7198 MERCHANT STE A-1
EL PASO, TX 79915
915/591-6800

DALLAS-RICHARDSON
610 S. Sherman ST.
STE. 118
RICHARDSON TX. 75081
972/234-1163

HOUSTON-BLALOCK
4400 BLALOCK ROAD
SUITE 100
HOUSTON TX 77041
713/460-8800

BATON ROUGE
5813 MCCANN DRIVE
BATON ROUGE, LA 70809
225/620-0950

NEW ORLEANS
300 JEFFERSON HWY
BLDG 4 STE. 701
JEFFERSON, LA 70121
504/539-3102

KANSAS CITY
3030 SOUTHWEST BLVD
KANSAS CITY MO 64108
816/561-1617