



FLEXPATCH *POLYMER PATCHING MORTAR*

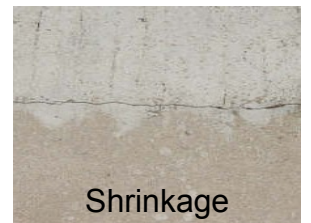
Features

- Non-conductive
- Fast installation
- Elastomeric
- Abrasion resistant
- Waterproof
- Outlasts cement based patches
- No shrinkage
- ASTM C881, Grade 1, Class B & C

Benefits

- No “Halo” effect
- Short traffic closure
- Moves with deck
- Long wearing
- No salt freeze/thaw damage
- Low life cycle cost
- No edge cracks
- VOC Compliant

Eliminates increased deterioration caused by cement based patches:



Serving the companies that build America



FLEXPATCH POLYMER PATCHING MORTAR

Product Description

A three-component, 100% solids, multi-purpose, high-strength, Non-shrink, waterproof, non-conductive, semi-flexible polymer patching mortar for longer lasting patches with excellent workability. The system combines a high quality polymer resin and curing agent with an engineered blend of graded aggregates.

Uses

- Bridge Decks
- Roadways
- Parking and garage decks
- Conforms to ACPA Bulletin TB003 for use in partial depth pavement repairs
- Concrete pavement joint edge repair
- Meets USDA Specifications for use in food processing areas

Packaging

.5 cu. ft. Unit (.014 cu. m.)	Consisting of a 1/2 gallon each of part "A" and "B", and 1 bag of aggregate.
1.0 cu. ft. Unit (.028 cu. m.)	Consisting of 1 gallon each of part "A" and "B", and 2 bags of aggregate.
5.0 cu. ft. (.140 cu. m.)	Consisting of 5 gallons each of part "A" and "B", and 10 bags of aggregate.

Shelf Life: 2 years in original unopened container.

Storage Conditions: Store at 50°-90°F. Condition at 65°-80°F before using.

Typical Physical Properties

Compressive Strength	PSI @ 4 hrs. (Method B) PSI @ 24 hrs. (Method B)	1500 Min 4500 Min.	ASTM C579 ASTM C579
Bond Strength	PSI	2500 Min.	ASTM C882
Linear Shrinkage	Percent	Negligible	ASTM C531
Abrasion Resistance	Weight Loss (H-22) Grams	1.0 Max.	ASTM C501
Chloride Ion Permeability	Coulombs	1.0 Max.	AASHTO T-277
Thermal Compatibility	Pass	Pass	ASTM C884

Application

Surface Preparation:



Step 1: Remove all deteriorated and unsound concrete with chipping hammers. Chipping hammer shall not exceed 30lbs.



Step 2: Thoroughly clean patch area by sandblasting. Any exposed reinforcing steel shall be blasted to white metal finish.



Step 3: Blow all dust and loose particles from patch area with oil/moisture free compressed air.

Mixing:

FLEXPATCH 1 cu. ft. kit or larger should be mixed using a paddle mortar mixer. Do not attempt to hand mix large quantities. Small quantities of FLEXPATCH can be easily mixed using a heavy-duty hand drill. Mechanically mix A and B components 1:1 by volume with a Jiffy mixer and variable speed drill @ 300 rpm for a minimum of 3 minutes.

Step 1: Mechanically mix A & B components 1:1 by volume in a clean pail and mix thoroughly for 3 minutes with a drill and spiral, jiffy-type mixer on low-speed.

Step 2: If mixing in a pail, while stirring slowly add the included amount of aggregate to the mixed FLEXPATCH liquid polymer until thoroughly mixed. Up to 5 cubic feet per batch can be mixed using an appropriately sized paddle-type mortar mixer. Call for mixing and clean up instructions.

Patching Concrete:



If the depth of the patch is less than 1", approximately 10% of the aggregate should be withheld. Place FLEXPATCH into prepared hole. Screed or float to desired level. Thoroughly compact and finish with a steel trowel, paying special attention to edges.

Limitations

- Minimum substrate temperature is 40°F (5°C)
- Minimum age of concrete for bonding should be 28 days unless manufacturer is consulted.
- Not for full-depth repairs

Clean-up

EQUIPMENT: Uncured material can be removed with CITRUS CLEANER or other approved solvent. Cured material can only be removed mechanically.

MATERIAL: Collect with absorbent material. Dispose of in accordance with local, state and federal disposal regulations.

First Aid

EYE CONTACT: Flush immediately with water for at least 15 minutes. Contact physician immediately.

RESPIRATORY CONTACT: Remove person to fresh air.

SKIN CONTACT: Remove any contaminated clothing. Remove polymer immediately with a clean, dry towel and wash skin thoroughly with soap and water. Solvents should not be as they carry the irritant into the skin.

CURED POLYMER IS INNOCUOUS.

Cautions

Component A: Irritant
Component B: Corrosive

Product is a strong sensitizer. Use of safety goggles and chemical resistant gloves is recommended.

Use of a NIOSH/MSHA organic vapor respirator is recommended if ventilation is inadequate.

Avoid breathing vapors.

Avoid skin contact.

FLEXPATCH POLYMER PATCHING MORTAR is part of the SSI Family of transportation products:

**SILSPEC® 900PNS • SILSPEC® 2000 • SILSPEC® FLEXPATCH • SILSPEC® RE-DECK
SILSPEC® DECKSEAL • SILSPEC® SES • SILSPEC® SSS**

Warranty Limitations: SSI REPRESENTS TO THE PURCHASER OF THIS PRODUCT FROM SSI (REFERRED TO AS CUSTOMER) THAT THE INFORMATION IN THIS LITERATURE IS AN ACCURATE DESCRIPTION OF THE TYPICAL CHARACTERISTICS, PROPERTIES AND USES OF THE PRODUCT, IF TRANSPORTED, STORED AND APPLIED IN ACCORDANCE WITH THIS LITERATURE AND THE REFERENCED MATERIAL SAFETY DATA SHEET. UNLESS SSI PROVIDES BEFORE PRODUCT INSTALLATION AN EXPRESS WRITTEN WARRANTY AFTER RECEIPT AND EVALUATION OF SPECIFIC WRITTEN PROJECT CONDITIONS AND APPLICABLE SCOPE DOCUMENTATION, SSI'S EXCLUSIVE WARRANTY IS THAT THE PRODUCT WILL CONFORM TO THE SALES REPRESENTATIONS STATED HEREIN AND THE CURRENT MATERIAL SAFETY DATA SHEET. SSI EXPRESSLY DISCLAIMS ALL OTHER EXPRESS OR IMPLIED WARRANTIES, INCLUDING WITHOUT LIMITATION WARRANTIES OF MERCHANTABILITY AND FITNESS FOR PARTICULAR PURPOSE. IN NO EVENT SHALL SSI'S LIABILITY FOR DAMAGES ARISING FROM THE SALE OF THIS PRODUCT THE AMOUNT OF PURCHASE PRICE RECEIVED BY SSI FROM CUSTOMER FOR THIS PRODUCT DELIVERED TO THE PROJECT IN QUESTION, OR AT SSI'S SOLE OPTION, SSI MAY REPLACE THE PRODUCT OR PORTION THEREOF THAT DOES NOT CONFORM TO THE FOREGOING REPRESENTATION. SSI EXPRESSLY EXCLUDES ANY LIABILITY FOR SPECIAL OR CONSEQUENTIAL DAMAGES.

CUSTOMER IS SOLELY RESPONSIBLE FOR EVALUATING JOB CONDITIONS AND THE SUITABILITY OF DESCRIBED PHYSICAL PROPERTIES AND CHARACTERISTICS OF THE PRODUCT TO MEET SPECIFIED OR APPARENT PROJECT REQUIREMENTS AND FOR APPLICATION OF THE PRODUCT IN ACCORDANCE WITH SSI'S RECOMMENDATIONS.

THESE REPRESENTATIONS ARE INTENDED FOR RELIANCE EXCLUSIVELY BY THE CUSTOMER AND ARE NOT INTENDED TO BENEFIT ANY OTHER PERSON OR ENTITY. THESE EXCLUSIONS, MODIFICATIONS OR LIMITATIONS OF WARRANTIES, INCLUDING THEIR EFFECT ON RIGHTS AND REMEDIES, THAT ARE EFFECTIVE AGAINST ARE ALSO EFFECTIVE AGAINST SUBSEQUENT PURCHASERS, USERS AND THIRD PARTY BENEFICIARIES OF THE SALE OF THIS PRODUCT.

SSI UNDERTAKES NO RESPONSIBILITY FOR STORAGE, MIXTURE, PREPARATION OF SURFACES, APPLICATION, USE OR MIS-USE OF PRODUCT OR ITS CONFORMITY TO SPECIFICATIONS THAT ARE NOT PREVIOUSLY AND EXPRESSLY ACKNOWLEDGED IN WRITING BY SSI.



800-888-8909 • Fax 918-582-7510 • www.ssicm.com

TULSA
430 S. ROCKFORD
TULSA, OK 74120
918/587-5567

OKLAHOMA CITY
610 NE 36th ST.
OKLAHOMA CITY, OK
73105
405/524-9525

DALLAS
2367 GLENDA LANE
DALLAS, TX 75229
972/243-0676

HOUSTON
2211 SABINE
HOUSTON, TX 77007
713/862-3900

AUSTIN
13815 IMMANUEL ROAD
PFLUGERVILLE, TX 78660
512/326-1156

SAN ANTONIO
2104 MANNIX
SAN ANTONIO, TX 78217
210/930-6360

MCALLEN
1503 MID-CITIES DRIVE
PHARR, TX 78577-2128
956/782-1341

FT. WORTH
2545 BERNER ST.
FORT WORTH, TX 76111
682/647-1881

EL PASO
7198 MERCHANT STE A-1
EL PASO, TX 79915
915/591-6800

DALLAS-RICHARDSON
610 S. Sherman ST.
STE. 118
RICHARDSON TX. 75081
972/234-1163

HOUSTON-BLALOCK
4400 BLALOCK ROAD
SUITE 100
HOUSTON TX 77041
713/460-8800

BATON ROUGE
5813 MCCANN DRIVE
BATON ROUGE, LA 70809
225/620-0950

NEW ORLEANS
300 JEFFERSON HWY
BLDG 4 STE. 701
JEFFERSON, LA 70121
504/539-3102

KANSAS CITY
3030 SOUTHWEST BLVD
KANSAS CITY MO 64108
816/561-1617